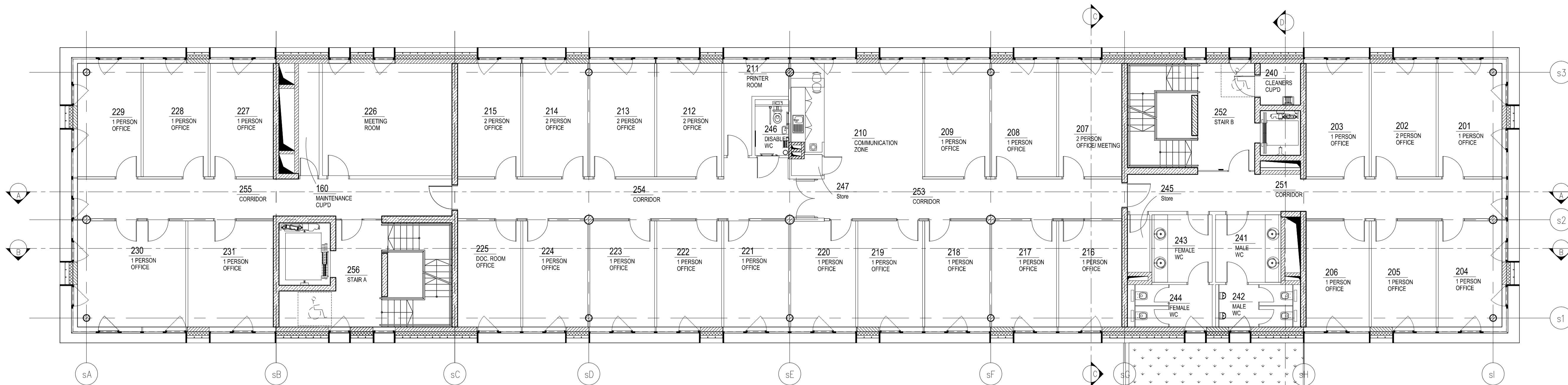
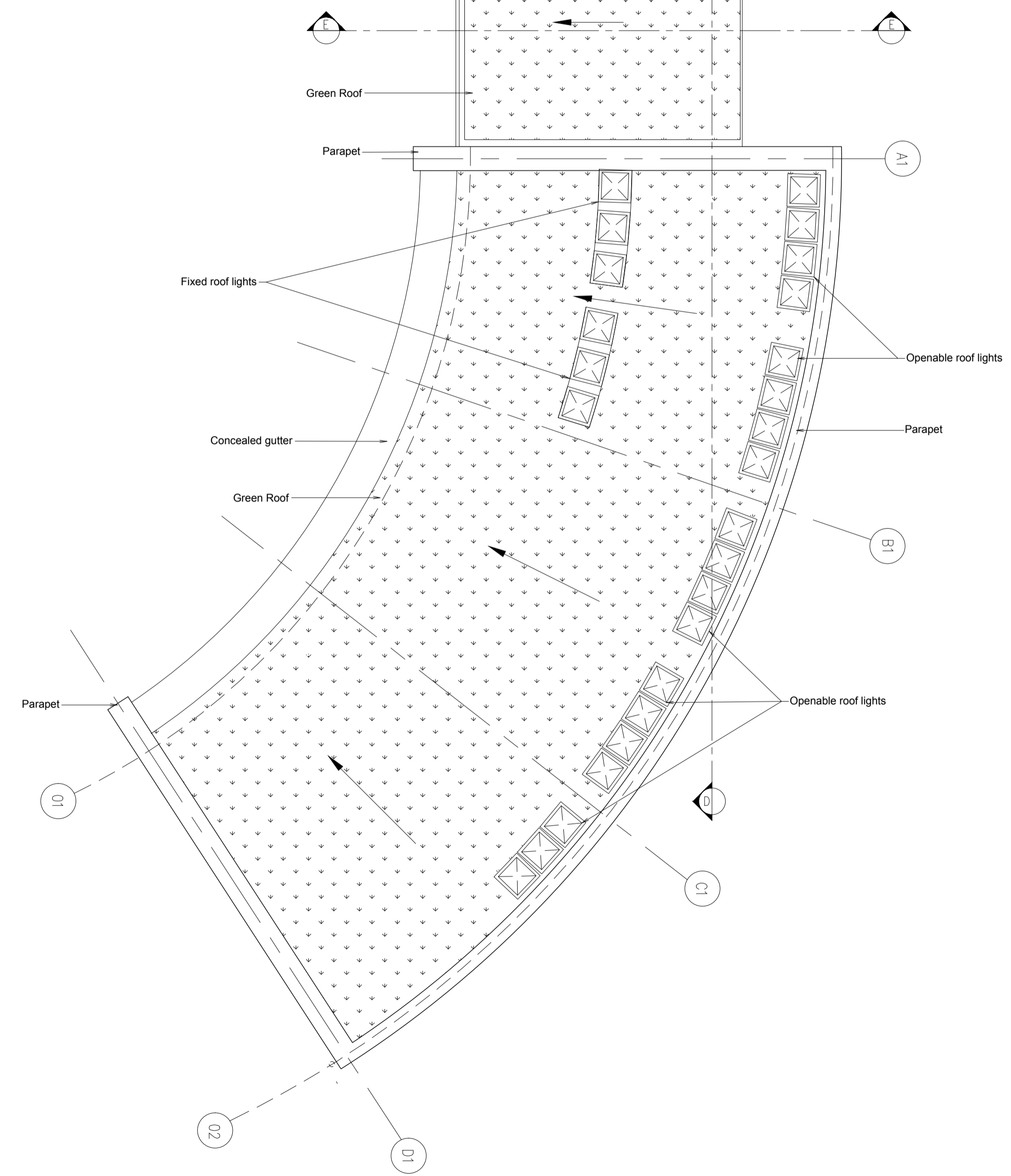


This drawing is to be read in conjunction with all relevant consultants and specialists drawings. The Architect is to be notified of any discrepancies before proceeding. Do not scale from this drawing. All dimensions are to be checked on site. This drawing is subject to copyright.



**P13/V2140/EZ
Appendix 2**



P1	pm	Planning Issue	20.09.13
no.	by	chk. revision	date

WILSON MASON
Wilson Mason LLP - Chartered Architects
3 Chandos Street, Cavendish Square, London W1G 9JU
t: 020 7637 1501 www.wilsonmason.co.uk

project
**European Space Agency
Harwell Development**

title
**Proposed Second Floor Plan
General Arrangement**